



The Anchor News

Serving the local community in the name of Christ since 1859

19th April 2024

#LearningforLifeAnchoredInChrist

Our values focus this half term **Compassion**



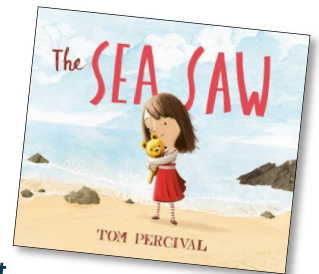
Hi everyone,

I hope you all doing well. Can you believe it, were already 2 weeks into our term. This week year 1 went to Cadburys world. The children and staff enjoyed it very much as we took the train. They loved it as for some it was a completely new experience travelling by train. In history we have been learning about John Cadbury, so this trip allowed the children to act like little historians and share their knowledge, see how the chocolate was being made and have further discussions with the workers at the Bournville site. I must say the children enjoyed exploring the factory especially the 4D ride and tasting the chocolate who wouldn't hey?

Our class read this week has been the book called "The Sea Saw" written by Tom Percival. It's about a girl who lost her favourite toy and the journey she went on to find it. The children brought in their favourite teddies this week and spoke about why their teddy is special to them. They really enjoyed sharing their experiences.

Before I go, I would like to remind parents please can you make sure your children are bringing their bookbags in every day.

Have a lovely weekend!



Miss Parker - Teaching Assistant

Year 1 Enjoy a Trip to find out about the history of chocolate.

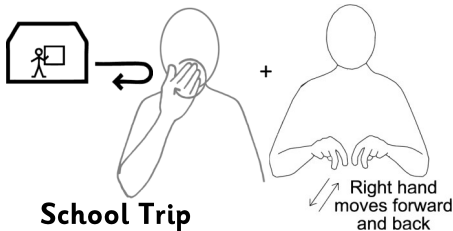
On Monday Year 1 went on a trip to Cadbury World which is in a small village on the outskirts of Birmingham called Bourneville.

The reason for our trip was to support our learning in History and to learn about a local historian. The children learnt about John Cadbury who founded the Cadbury chocolate company. The children had a great time learning some interesting facts about his life and how chocolate is made. We even got to taste some! The highlight was we were all given some free chocolate to take away with us.

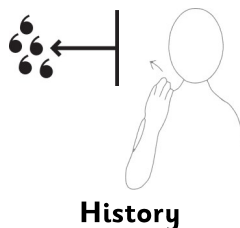
All in all it was a very successful trip as the children behaved impeccably and we all had a great time. Well done Year 1!!



Signs of
Makaton
the week



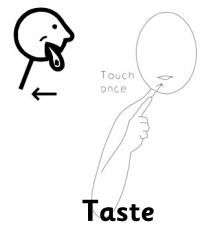
School Trip



History



Chocolate



Taste

Head Teacher: Miss Shryane
Deputy Head Teacher: Mrs Nizamis



St. Clement's Academy
Butlin Street, Nechells,
Birmingham, B7 5NS

Phone: 0121-464-4652 E-mail: office@stclements.bdmatt.org.uk

Make sure to
check our accounts
and keep up
to date

www.stclements.bdmatt.org.uk
www.facebook.com/StClemNechells
www.instagram.com/stclem_nechells



Important Upcoming Dates

May	6th	Bank Holiday - SCHOOL CLOSED
	W/C 13th	Year 6 SATs Week
	W/C 20th	Year 2 SATs Week
	Tues 21st	First Day of Book Fair (More info to follow)
	24th May	End of Term
Monday 27th - Friday 31st May Half Term Break		
June	Mon 3rd	First Day Back - Normal Time
	Thurs 6th	Last Day of Book Fair

Star Pupils

Summer & Lamaisah

Jola and Ali-Asghar

Kingsley & Zuleharsh

Aaminah-Malia & Mohamed

Majobe & Anaya

Mariam & Miguel

Aliyssia & Mohamed

Lunchtime Star

Marnie-Louise (Yr. 1)

Parent Coffee Mornings



9am - 10am

We hope you enjoyed today's session and we hope you will come along and join us in discussion about the school and issues impacting the local community at our next session on

Friday 3rd May

Friday 17th May

Attention Current Year 4/5 Children

Please note that the December Residential has been cancelled. Please collect your £20 deposit from the school office.

Attendance & Punctuality



	Rec	Yr.1	Yr.2	Yr.3	Yr. 4	Yr. 5	Yr. 6
Attendance	90%	80%	90%	93%	85%	87%	91%
Punctuality	12	9	2	8	4	12	4

Compassion and tolerance are not a sign of weakness, but a sign of strength.

Dalai Lama



Safeguarding: Signs of CSE – Child Sexual Exploitation

Knowing the signs of CSE can help give a voice to children. A child is unlikely to know they are being groomed or exploited and might not speak out. Any sudden changes in a young person's lifestyle should be discussed with them. It is important to remember that warning signs will be presented differently for each child or young person being exploited.

Signs that a child or young person is being groomed or is a victim of CSE include:

- Unhealthy or inappropriate behaviours (older than their years).
- Persistently going missing for periods of time or returning home late regularly.
- Being secretive about who they are talking to and where they are going.
- Using more than one phone.
- Spending more time online or on their devices.
- Excessive receipt of texts or phone calls, letters, or emails.
- Having an older girlfriend or boyfriend or having relationships with controlling older individuals or groups.
- Suddenly acquiring expensive gifts such as mobile phones, jewellery – even drugs – and not being able to explain how they came by them.
- Having mood swings and changes in temperament.
- Having hotel cards or keys to unknown places.
- Noticeable changes in behaviour – becoming secretive, defensive, or aggressive when asked about their personal life.
- Wearing inappropriate clothing that is too adult or revealing for their age.
- Increasingly disruptive or violent behaviour.



The Birmingham Diocesan Multi-Academy Trust is a company limited by guarantee and is registered in England and Wales: Company No 10729883. The registered office is Birmingham Diocesan Multi-Academy Trust, BDMAT Central Office, Christ Church, Church Of England Secondary Academy, Daleview Road, Yardley Wood, Birmingham, B14 4HN